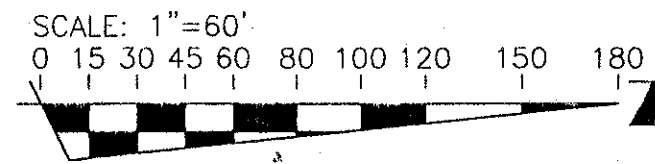


# ABERDEEN PLAT 21

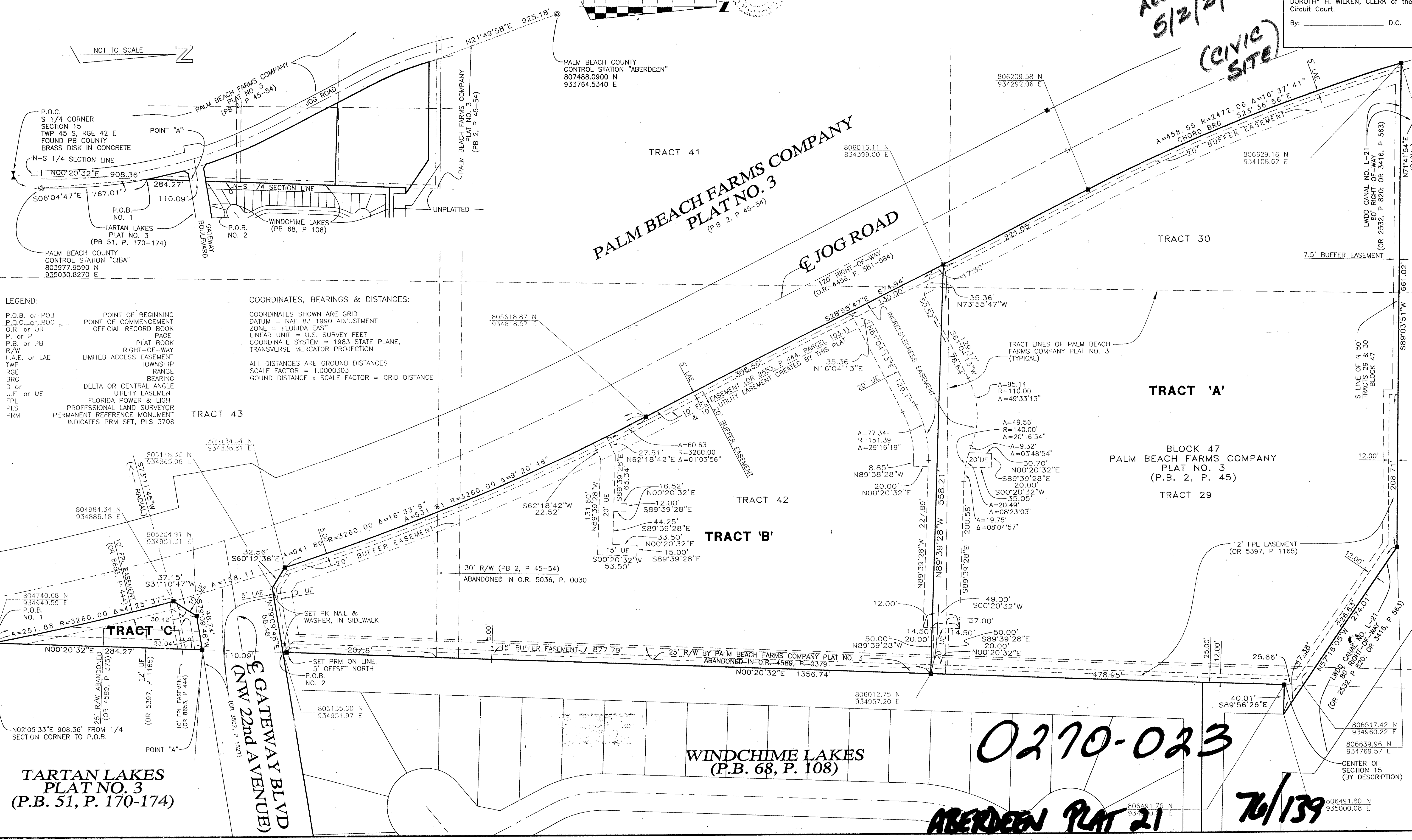
A PART OF ABERDEEN P.U.D., SITUATE IN SECTION 15, TOWNSHIP 45 SOUTH, RANGE 42 EAST, PALM BEACH COUNTY, FLORIDA, BEING A REPLAT OF A PORTION OF TRACTS 29, 30, 41, 42 AND 43, BLOCK 47, PALM BEACH FARMS COMPANY PLAT NO. 3, AS RECORDED IN PLAT BOOK 2, PAGES 45 THROUGH 54, INCLUSIVE, OF THE PUBLIC RECORDS OF SAID PALM BEACH COUNTY.  
JUNE, 1995. SHEET 2 OF 2

PET. 80-153  
ALOC. #0001  
5/2/2/I  
(CIVIC SITE)

STATE OF FLORIDA SS  
COUNTY OF PALM BEACH  
This plat filed for record at \_\_\_\_\_  
this \_\_\_\_\_ day of \_\_\_\_\_  
19\_\_\_\_ and duly recorded in Plat  
Book \_\_\_\_\_ on page \_\_\_\_\_  
DOROTHY H. WILKEN, CLERK of the  
Circuit Court.  
By: \_\_\_\_\_ D.C.



PALM BEACH COUNTY  
CONTROL STATION "ABERDEEN"  
807488.0900 N  
933764.5340 E



**LEGEND:**  
P.O.B. or POB POINT OF BEGINNING  
P.O.C. or POC POINT OF COMMENCEMENT  
O.R. or OR OFFICIAL RECORD BOOK  
P. or P PAGE  
P.B. or PB PLAT BOOK  
R/W RIGHT-OF-WAY  
L.A.E. or LAE LIMITED ACCESS EASEMENT  
TWP TOWNSHIP  
RGE RANGE  
BRG BEARING  
D or U DELTA OR CENTRAL ANGLE  
U.E. or UE UTILITY EASEMENT  
FPL FLORIDA POWER & LIGHT  
PLS PROFESSIONAL LAND SURVEYOR  
PRM PERMANENT REFERENCE MONUMENT  
INDICATES PRM SET, PLS 3708

**COORDINATES, BEARINGS & DISTANCES:**  
COORDINATES SHOWN ARE GRID  
DATUM = NAD 83 1990 ADJUSTMENT  
ZONE = FLORIDA EAST  
LINEAR UNIT = U.S. SURVEY FEET  
COORDINATE SYSTEM = 1983 STATE PLANE,  
TRANSVERSE MERCATOR PROJECTION  
ALL DISTANCES ARE GROUND DISTANCES  
SCALE FACTOR = 1.000303  
GROUND DISTANCE x SCALE FACTOR = GRID DISTANCE

SUBDIVISION - ABERDEEN  
BOOK 76 PAGE 139  
FLOOD ZONE F  
QUAD # 34 ZONING RT5  
RE 74-1178-153 ZIP CODE 33427  
PUD NAME SAME

TAZ-411

0270-023

ABERDEEN PLAT 21

76/139

TARTAN LAKES  
PLAT NO. 3  
(P.B. 51, P. 170-174)

WINDCHIME LAKES  
(P.B. 68, P. 108)

CENTER OF SECTION 15  
(BY DESCRIPTION)